



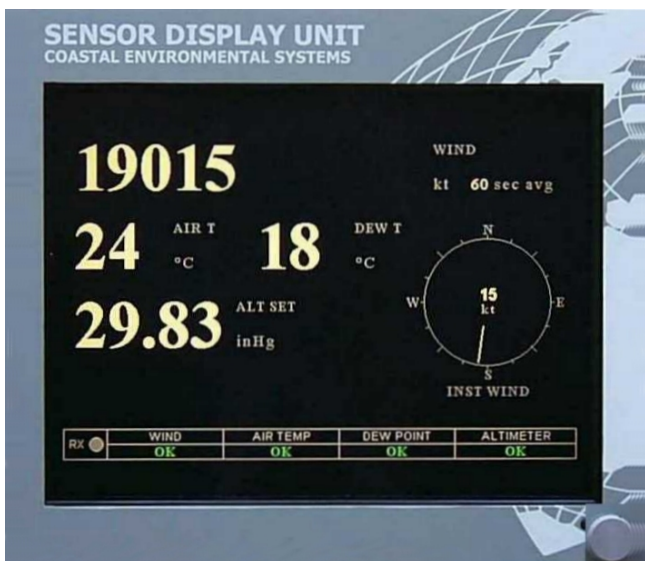
**For Details, Contact:**

**Patrick Kelly, VP Sales and Marketing**  
Coastal Environmental Systems  
820 – 1<sup>st</sup> Avenue S  
Seattle, WA  
Pkelly@coastalenvironmental.com  
www.coastalenvironmental.com  
206.682.6048

## COASTAL ENVIRONMENTAL SYSTEMS NEW WAYS TO DISPLAY WEATHER DATA AT AIRPORTS

**Seattle, WA:** Coastal Environmental Systems is adding two new ways to display weather data at airports to our aviation weather station product line. Currently, data can be displayed on PC's and on a stand alone unit, as used in the FAA, SAWS product. Both of the new displays give the same data as the SAWS (FAA) systems. The new displays provide the same "look and feel" on either a PC-based display or on a smaller, stand alone display. The smaller display may be used in a TRACON or elsewhere, where light levels are low and space is at a premium.

The stand alone display, shown below, is 5 ½ by 8 ½ inches and the PC-based display will adapt to whatever size screen (CRT) it is being displayed on.



*Standard SAWS display –Flat Panel, Daylight readable*



*TRACON display design – Flat Panel*

The PC-based display has identical graphics to the pictures above, except on a CRT type screen. A new Flat panel screen can also be used, providing the advantage to view other data from the PC.

**For Immediate Release**

.....